



ROGERS

YEAR-ROUND COMMUNITY
TENNIS COURTS PROGRAM



COMMUNITY TENNIS COURTS

4

YEAR-ROUND
COMMUNITY TENNIS COURT
PROJECT LOCATIONS CONFIRMED

1,881

Collectively these communities will see court time opportunities increase by roughly 1,881 hours per week during the winter months.

**1.7
MILLION**

Constituents will be served by the year-round courts in the 4 communities combined

**\$5.6
MILLION**

Rogers' total investment in the program is \$ 5.6 million, including a combined \$800,000 of seed money for these first 4 projects.

**4 YEAR-ROUND
COMMUNITY
TENNIS COURTS**

4 Year-Round Community Tennis Courts Locations confirmed: Stratford, Thunder Bay, Toronto and Edmonton.



STRATFORD, ON

Stratford Winter Tennis Club

5

Courts being covered

495

Additional winter court time hours per week

\$200,000

Seed money invested by Rogers

34,500

Population of constituents covered courts will serve

TORONTO, ON

The Courts at San Romanoway operated by Philpott Children's Tennis

2

Courts being covered

200

Additional winter court time hours per week

\$200,000

Seed money invested by Rogers

27,500

Population of constituents covered courts will serve

THUNDER BAY, ON

Thunder Bay Community Tennis Centre

6

Courts being covered

595

Additional winter court time hours per week

\$200,000

Seed money invested by Rogers

112,500

Population of constituents covered courts will serve

EDMONTON, AB

Saville Tennis Centre, University of Alberta

6

Courts being covered

595

Additional winter court time hours per week

\$200,000

Seed money invested by Rogers

1.54 MILLION

Population of constituents covered courts will serve

PROJECT DELIVERY 2023-24 WINTER SEASON

Have questions about how to make year-round tennis a reality in your community?
Email coveredcourts@tenniscanada.com

Learn more about the Year-Round Community Tennis Courts Program presented by Rogers at tenniscanada.com/facilities-program



ROGERS.

**YEAR-ROUND COMMUNITY
TENNIS COURTS PROGRAM**

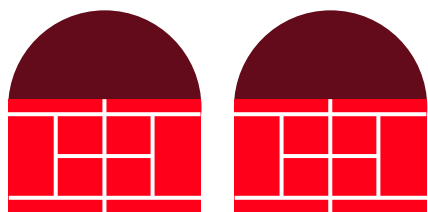
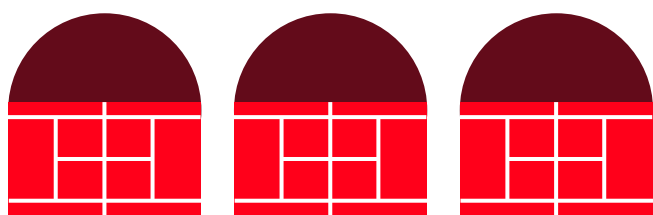


ROGERS.

YEAR-ROUND COMMUNITY TENNIS COURTS PROGRAM

STRATFORD, ON

Stratford Winter Tennis Club



5

courts being covered



495

additional Winter court time hours per week

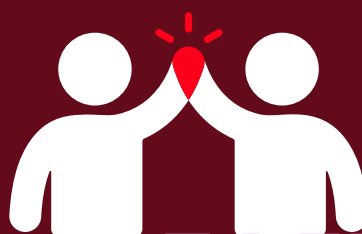
\$200K



Seed money invested by Rogers

Project delivery

2023-24 Winter season



34,5K

Population of constituents covered courts will serve

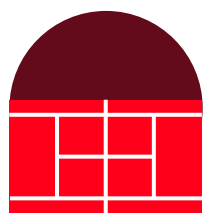


ROGERS.

YEAR-ROUND COMMUNITY
TENNIS COURTS PROGRAM

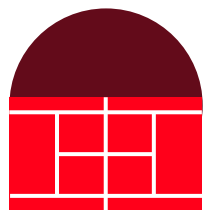
TORONTO, ON

The Courts at San Romanoway operated by Philpott Children's Tennis



2

courts being covered



200

additional Winter court
time hours per week

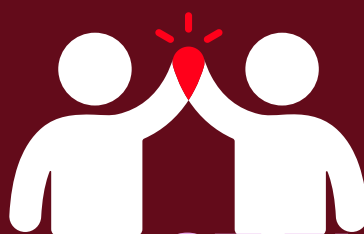
\$200 K

Seed money
invested by Rogers



Project delivery

2023-24 Winter season



27,5K

Population of constituents
covered courts will serve



ROGERS.

YEAR-ROUND COMMUNITY TENNIS COURTS PROGRAM

THUNDER BAY, ON

Thunder Bay Community Tennis Centre



6 courts being covered



595

additional Winter court time hours per week

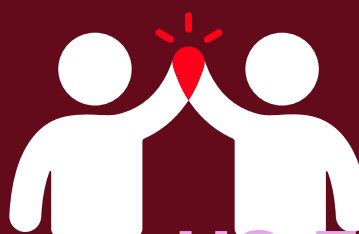
\$200 K



Seed money invested by Rogers

Project delivery

2023-24 Winter season



112,5K

Population of constituents covered courts will serve



ROGERS.

YEAR-ROUND COMMUNITY
TENNIS COURTS PROGRAM

EDMONTON, AB

Saville Tennis Centre, University of Alberta



6 courts being covered

Project delivery

2023-24 Winter season



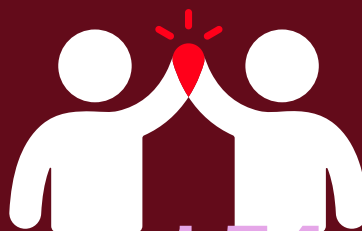
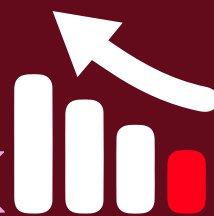
595

additional Winter court time hours per week



\$200 K

Seed money invested by Rogers



**1.54
MILLION**

Population of constituents covered courts will serve